

ASSEMBLY INSTRUCTIONS

2014

PARTS IN THIS PACKAGE

A. Base	(1 pc.)
B. Bottom plate	(1 pc.)
C. Rods	(15 pcs.)
D. Adjustable square shelves	(12 pcs.)
E. Non-adjustable rectangular shelves	(2 pcs.)
F. Spheres	(5 pcs.)
G. Clips	(36 pcs.)
H. Couplers-already attached to the rods	(15 pcs.)
I. Top plate	(1 pc.)

* 6 pcs of extra clips include.

INSTRUCTIONS

- For every coupler on the base, screw a rod "C".
MUST TIGHTEN THE RODS FOR STABILITY.
- Slide a clip "G" on each rod which are in positions 1, 2, & 3 as shown on figure IV, by squeezing the ends of the clip. This will allow you to slide the clip up or down on the rod, releasing them at the desired level of the shelf.
Note: Each shelf should be supported by 3 clips.
- Slide an adjustable shelf "D" on the 3 rods, resting the shelf on the clips stated in step 2. Note: The lip of the shelf must be facing up and in line with the shelf already on the base.
- Now slide a clip "G" on each rod which are in positions 3, 4, & 5 (as in step 2).
- Slide an adjustable shelf "D" on the 3 rods in positions 3, 4, & 5 (as is step 3).
- To place the fourth shelf, repeat steps 2 & 3 respectively. To place the fifth shelf, repeat steps 4 & 5 respectively.
- Place a non-adjustable rectangular shelf "E" on top of the rods. Note: No clips will be needed.
Now, you have completed section I.
- Follow the above to complete sections II and III.
- To complete section III, place the top plate on the rods (as in step 7). Secure the plate with the 5 spheres.

* FOR ADDITIONAL SHELVES WRITE TO:
ATLANTIC, INC., P.O. BOX 2399, DEPT. P
SANTA FE SPRINGS, CA 90870 U.S.A.

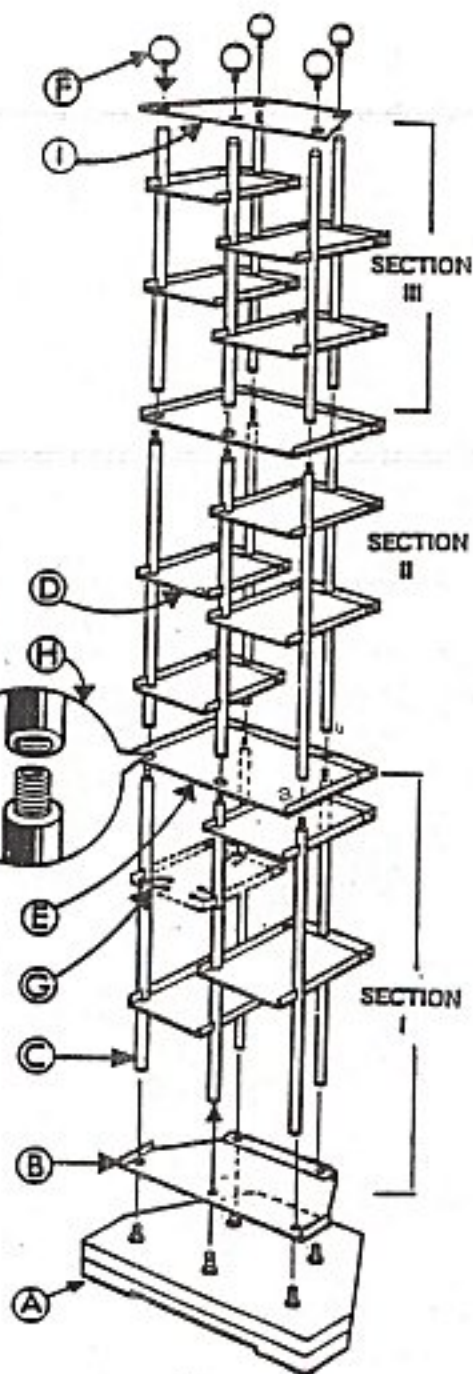
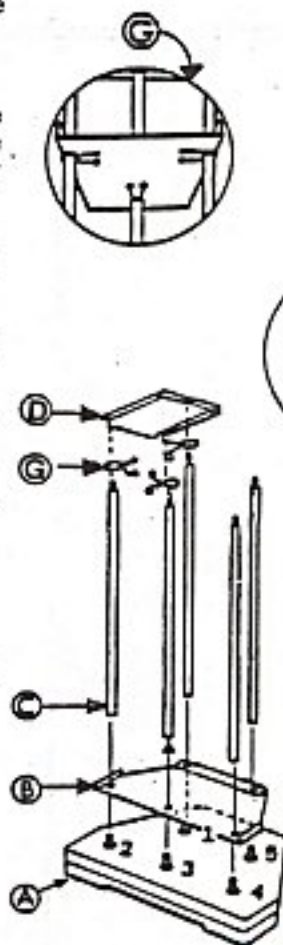
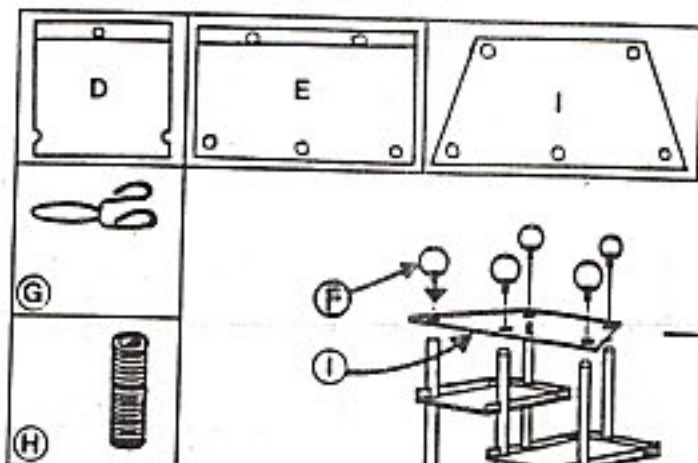


FIGURE IV

WEB PAGE ADDRESS: "http://www.atlantic-inc.com"

ATLANTIC

© 1998 ATLANTIC, INC., SANTA FE SPRINGS, CA, USA

ITEM NO. 2014 / 2015

U.S. PATENT NO. 5,195,642 CANADIAN PATENT NO. 2,087,676

Other U.S. and foreign patents pending

WEB PAGE ADDRESS: "http://www.ATLANTIC-INC.com"

E-MAIL ADDRESS: atlantic@atlantic-inc.com